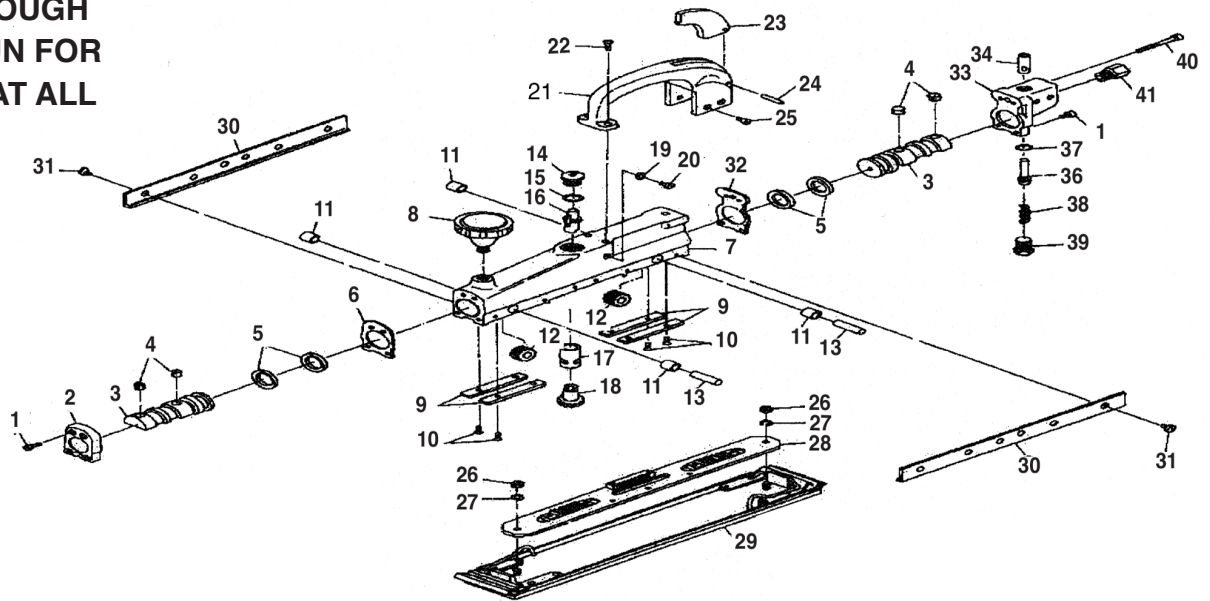


T-7315 STRAIGHT LINE SANDER 2-3/4" X 17-1/2" PAD



**OILING INSTRUCTIONS:
OIL AFTER EACH USE
WITH A FEW DROPS OF
AIRTOOL OIL THROUGH
THE AIR INLET. RUN FOR
1 SECOND TO COAT ALL
INTERNAL PARTS.**



USE 90 PSI MAXIMUM

REF #	PART #	DESCRIPTION	QTY	REF #	PART #	DESCRIPTION	QTY
1	731501	SCREW	6	21	731521	HANDLE	1
2	731502	FRONT CAP	1	22	731522	SCREW	2
3	731503	PISTON	2	23	731523	TRIGGER	1
4	731504	PLUG	4	24	731524	ROLL PIN	1
5	731505	PISTON RING	4	25	731525	SCREW	4
6	731506	FRONT GASKET	1	26	731526	HEXAGON NUT	2
7	731507	BODY	1	27	731527	WASHER	2
8	731508	KNOB	1	28	731528	CARRIER	1
9	731509	WEAR PLATE	4	29	731529	PAD ASSEMBLY	1
10	731510	SCREW	8	30	731530	SIDE STRAP	2
11	731511	BEARING	4	31	731531	SCREW	12
12	731512	GEAR	2	32	731532	REAR GASKET	1
13	731513	GEAR SHAFT	2	33	731533	REAR CAP	1
14	731514	CAP	1	34	731534	BUSHING	1
15	731515	O-RING	1	36	731536	VALVE PIN	1
16	731516	ADJUSTMENT SHAFT	1	37	731537	O-RING	1
17	731517	ACTUATOR VALVE	1	38	731538	VALVE SPRING	1
18	731518	ACTUATOR GEAR	1	39	731539	VALVE PLUG	1
19	731519	PLASTIC WASHER	1	40	731540	SCREW	2
20	731520	SCREW	1	41	731541	AIR INLET	1

505 N. Railroad Ave. 33435
P.O. Box 1117 33425
Boynton Beach, FL

SEE MORE OF OUR CATALOG AT
www.taylorpneumatic.com

OCTOBER 2020 / ALL RIGHTS RESERVED / COPYRIGHT 2020

Ph. (561)732-1111
Fax. (561)731-4412
Toll Free (800) 805-8665